


#7612



2 BEDROOM OFFPLAN APARTMENT IN NEAPOILIS, LIMASSOL

€460,000

 Neapolis, Limassol

?An exclusive 4-floor building, offering a whole-floor 2- or 3-bedroom apartment on each level for ultimate privacy and comfort. Located in the heart of Neapolis, Limassol, it's within walking distance to the beach, supermarkets Alphamega and Lidl, pharmacies, and cafes, with easy access to the highway and just a 5-minute drive from Limassol Marina. Each apartment features covered parking, a storage room, a Photovoltaic system for energy efficiency, Underfloor heating and a VRV system for optimal climate control — combining modern luxury with convenience in one of Limassol's most sought-after neighborhoods.

Bedrooms

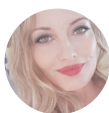
 2

Bathrooms


 2

Covered

 75 m²



Aikaterini Tzavara

 (+357) 96544717

 aikaterini@ctproperty.com.cy

