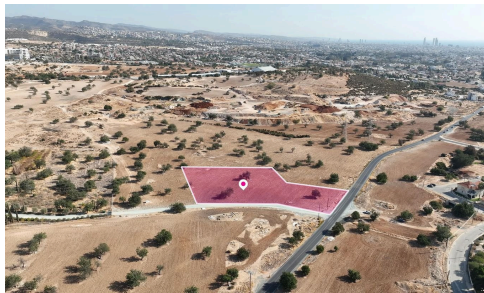
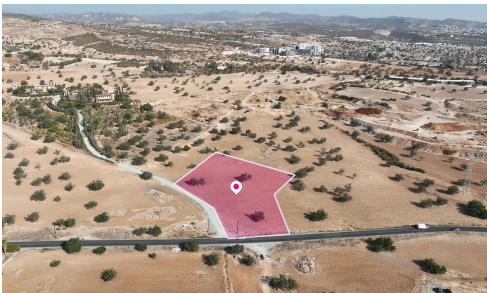


#8044



(Share) Mixed zone field in Kato Polemidia, Limassol

€65,000 +VAT


A 3/8 undivided share of a mixed-zone field with total land area of 6,689sq.m., corresponding to approximately 2,540sq.m. share. Property Highlights: • Total Field Area: 6,689sq.m. (3/8 share corresponds to approx. 2,540sq.m.) • Access: Via a registered public road along its southern boundary, with approximately 40m. of frontage Key Features: The land is currently vacant and benefits from proximity to all essential utility services including electricity, water, and telecommunications. Important Considerations: • Part of the land (approx. 2,035sq.m.) is affected by a planned expropriation for a future 4-lane motorway. • Approx. 3,480sq.m. of the Ka8 residential area is affected by overhead high-voltage EAC power lines with a 12.5m buffer zone. • Approx. 500sq.m. remains unrestricted residential land, unaffected by road plans or pylons. • A right-of-way of approx. 300sq.m. exists along the western boundary, providing

Area

 6689 m²



Charis Tsangarides

 (+357) 99445377

 charis@ctproperty.com.cy

