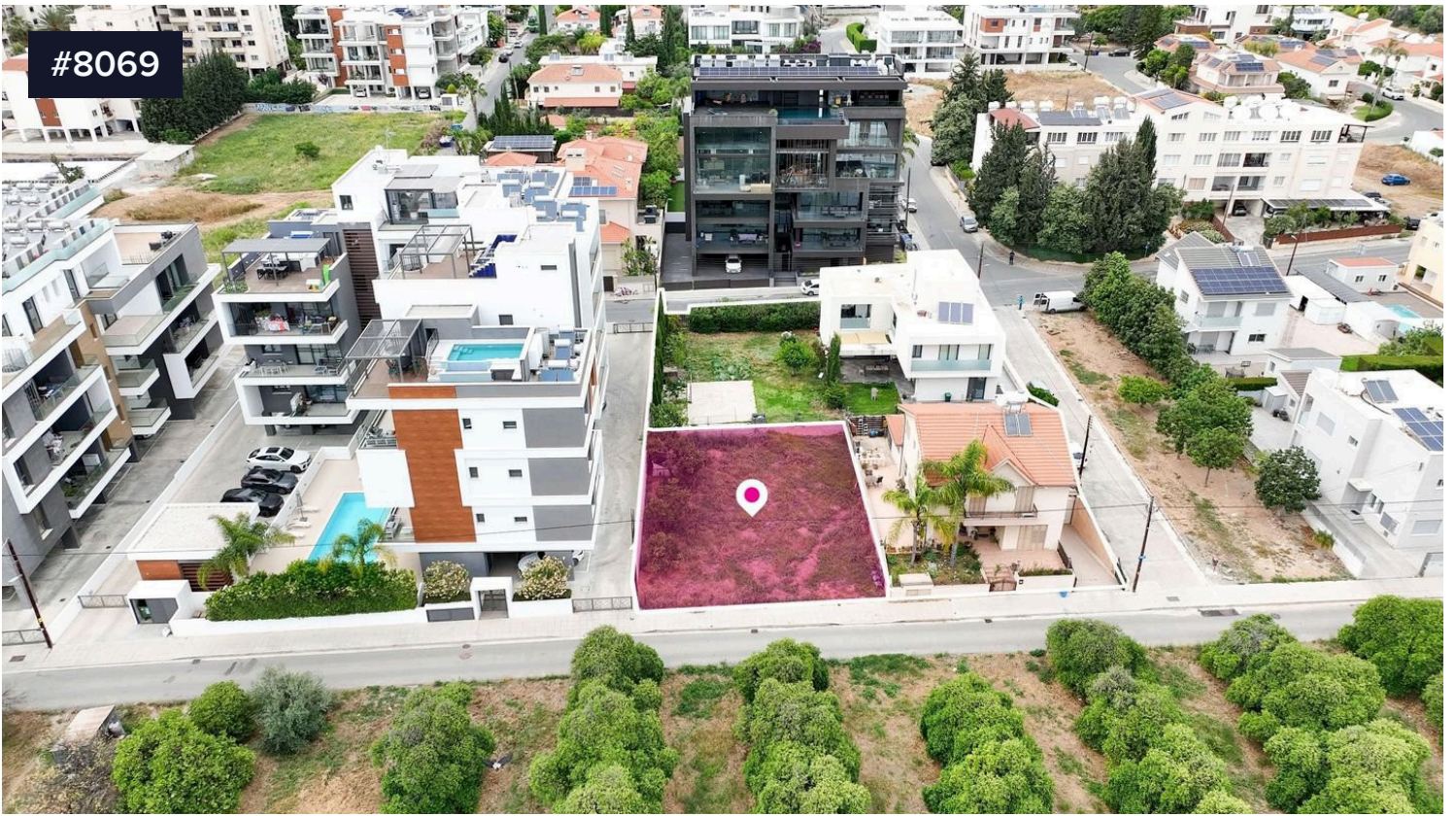


#8069



(Share) Distributed Touristic Plot in Germasogeia, Limassol

€650,000 +VAT


Strategic share of plot, ideal for residential or touristic development, situated in the prime coastal area of Potamos Germasogeias, Germasogia, Limassol. Property Highlights: • Total Plot Area: 1,554sq.m. (1/4 share, approximately 388sq.m.) • Frontage: Approximately 17m of road frontage on Mouson Street • Shape & Terrain: Regular shape with relatively flat terrain, offering optimized building efficiency and easy accessibility. • Infrastructure: Benefiting from direct access to registered asphalt roads, pedestrian connectivity, and close proximity to existing utility networks and urban infrastructure. Investment Potential: This well-positioned parcel represents an attractive opportunity for a boutique residential or touristic development in one of Limassol's most sought-after coastal areas. Its strategic location near the beachfront and surrounding high-end developments allows for flexible planning and strong long-

Area

 1554 m²



Charis Tsangarides

 (+357) 99445377

 charis@ctproperty.com.cy

